



2019 Canadian Stock Collection Featuring:





Champion



Next Level



Timberlea



Next Level



Champion



Next Level



Timberlea

# 2019 Canadian Stock Collection

## Table of contents

### **Timberlea**

Fleece Tops	4-5
-------------	-----

### **Next Level Apparel**

Festival Collection	8-9
Fine Jersey	10-11
CVC	12
Ideal Collection	13
Spandex Jersey	13
Lightweight French Terry	13
Tri-Blend	14-15
Denim Fleece	16
Mock Twist Jersey	17
PCH Fleece	17
Next Level Special Order	18-19

### **Champion**

#### **Champion Originals**

Originals Tees	24
Originals Fleece	25
Originals Women's French Terry	26

#### **Authentics**

Powerblend ECO Fleece	28-30
Youth Powerblend ECO Fleece	31
Reverse Weave Fleece	32
Classic Jersey	33-34

#### **Performance**

C Vapor Tees	35
Double Dry Tees	36
Women's Everyday Performance	37
Champion Mesh	38
Shorts	39

<b>Outerwear</b>	40-41
------------------	-------

<b>Accessories</b>	42-43
--------------------	-------

<b>Champion Special Order</b>	44-45
-------------------------------	-------

<b>Champion UltraFuse</b>	46-47
---------------------------	-------

### **About Catalyst**

We Decorate!	48
Size Charts	49
Index	50
Social & Environmental Responsibility	51



# timberlea

A P P A R E L

Timberlea is inspired by our great Canadian lifestyle. Authentic, idyllic and hardworking. Timberlea has created affordable, high-quality pieces that will keep you comfortable and on-trend everywhere you go, from sharing a brew with friends at the pub, to navigating the campus labyrinth, to listening to the crackle and hiss of the campfire under a sky full of stars. Timberlea is made for life in Canada.





**T2000 – Fleece ¼ Zip** Sizes: XS-2XL  
50% Cotton, 50% Polyester 280gsm



**T2001 – Fleece Varsity Jacket** Sizes: XS-2XL  
50% Cotton, 50% Polyester 280gsm

	Black	Navy	Oxford Grey	Black/Oxford Grey	Navy/Oxford Grey
T2000	●	●	●		
T2001				●	●



**NEXT LEVEL**  
A P P A R E L™

# WEAR IT. LOVE IT. SELL IT.

Next Level Apparel started with a simple but powerful idea...create a favourite tee crafted from superior fabrics in sizes and fits for real people, then make it available in all the best colours at a value second to none.

Next Level Apparel is a premium fashion blank that picks up where the basic brands leave off, giving you the freedom to choose an inspirational t-shirt or sweatshirt worthy of your message or design.







**NEXT LEVEL**  
APPAREL™

## Festival Collection

40 Single 120g / 5.9 oz  
65% Polyester /  
35% Combed Ring-Spun Cotton

Our silky soft poly/cotton is breathable,  
lightweight and durable.



5013



5030



5040

**5013 Women's Festival Muscle Tank** - Sizes: XS - XL

**5030 Women's Festival Scoop** - Sizes: XS - XL

**5040 Women's Festival Sleeveless V** -

Sizes: XS - XL

	Black	White	Charcoal	Antique Denim	Antique Gold	Royal Pine	Smoked Paprika
5013	●	●	●	●	●	●	●
5030	●	●	●			●	●
5040	②	●	●				

● Style is stocked in this colour

③ Style is stocked in additional sizes (3=3XL)

③/4 3XL & 4XL

② Style is stocked in additional sizes (2=2XL)





5033



5080

New



6200

**5033 Women's Festival Tank** - Sizes: XS - XL

**6200 Poly/Cotton Crew** - Sizes: S - 2XL

**5080 Women's Festival Cali Crop** - Sizes: XS - XL

	Black	White	Charcoal	Antique Denim	Antique Gold	Royal Pine	Smoked Paprika
5033	●	●	●	●	●	●	●
5080	●	●	●				
6200	●	●	●				

● Style is stocked in this colour

③ Style is stocked in additional sizes (3=3XL)

③/4 3XL & 4XL

② Style is stocked in additional sizes (2=2XL)



## FINE JERSEY

32 Single 145g / 7.1 oz  
100% Combed Ring-Spun Cotton

Our best selling combed ring-spun cotton tees are comfortable, soft and have the perfect fit!



**3600 Premium S/S Crew** - Sizes: XS - 2XL (Select Colours: 3XL - 4XL)

**3602 Long Body Crew** - Sizes: S - 2XL

**3310 Youth Premium S/S Crew** - Sizes XS (4/5) - XL (14/16)

**3900 Women's Boyfriend Tee** - Sizes: XS - 2XL (Select colours: 3XL)

**3710 Girl's Princess Tee** - Sizes: XS (3/4) - XL (14/16)

	Black	White	Cardinal	Cool Blue	Heather Grey	Heavy Metal	Indigo	Kelly Green	Light Olive	Midnight Navy	Military Green	Natural	Purple Rush	Red	Royal	Tahiti Blue	Turquoise
3600	3/4	3			3	3/4	3		3	3	3			3/4			
3900	3				3												
3602																	
3310																	
3710																	

● Style is stocked in this colour

③ Style is stocked in additional sizes (3=3XL)

3/4 3XL & 4XL

② Style is stocked in additional sizes (2=2XL)



3650

New



3604

New

3904

New

**3650 Unisex S/S Raglan Tee** - Sizes: XS - 3XL

**3604 Men's Ringer Tee** - Sizes: XS - 3XL

**3904 Women's Ringer Tee** - Sizes: S - 2XL

	Black/White	Black/Heather Grey	Warm Grey/Black	White/Black	Heather Grey/Black
3650	●	●	●		
3604				●	●
3904				●	

● Style is stocked in this colour

③ Style is stocked in additional sizes (3=3XL)

④ 3XL & 4XL

② Style is stocked in additional sizes (2=2XL)



**NEXT LEVEL**  
APPAREL™

### CVC

32 Single 145g / 7.1 oz  
60% Combed Ring-Spun Cotton /  
40% Polyester

The original CVC is a top of the line soft,  
heathered fabric that stands the test of time.



6210

3312



6610



3352

6640

**6210 Premium CVC Crew** - Sizes: XS -  
2XL (Select Colours: 3XL - 4XL)

**3312 Youth CVC Crew** - Sizes: XS  
(4/5) - XL (14/16)

**6610 Women's CVC  
Crew** - Sizes: XS - 2XL (Select  
Colours: 3XL)

**6640 Women's CVC  
Deep V** - Sizes: S - 2XL

**3352 Youth CVC ¾ Raglan** -  
Sizes: XS(4/5) - XL(14/16)

	<input type="radio"/>	<input type="radio"/>	<input type="radio"/>	<input type="radio"/>
SLEEVES	Midnight Navy	Black	Red	Royal
BODY	Dark Heather Grey	Dark Heather Grey	White	White

	Black	White	Apple Green	Bondi Blue	Cardinal	Charcoal	Dark Heather Grey	Espresso	Indigo	Ice Blue	Lush	Midnight Navy	Military Green	Mint	Purple Rush	Red	Royal	Sand	Storm	Warm Grey
6210	3/4	3				3/4	3/4					3				3	3/4			
3312																				
6610	3						3	3												
6640																				

● Style is stocked in this colour

③ Style is stocked in additional sizes (3=3XL)

③/4 3XL & 4XL

② Style is stocked in additional sizes (2=2XL)



## IDEAL COLLECTION

30 Single 135g / 6.6 oz  
60% Combed Ring-Spun Cotton / 40% Polyester

Ideal value with the confidence of quality. The shirts you have been waiting for, at a price you could only dream of.

## SPANDEX JERSEY

40 Single 145g / 7.1 oz  
57% Combed Ring-Spun Cotton / 38% Polyester / 5% Spandex

Our spandex jersey tanks have great stretch and memory for a comfortable fit with every wear.

## LIGHT WEIGHT FRENCH TERRY

30 Single 165g / 8.1 oz  
50% Combed Ring-Spun Cotton / 50% Polyester

The ultra-soft and light weight french terry has a perfect drape that flatters the body.



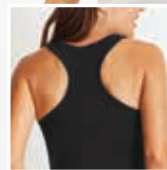
1533

1540



6633

6933



### 1533 Women's Ideal Racerback Tank - Sizes

XS - 2XL

### 1540 Women's Ideal V - Sizes: XS - 2XL (Select

Colours: 3XL)

### 6633 Women's Spandex Jersey Racerback Tank - Sizes XS - 2XL

Sizes XS - 2XL

### 6933 Women's Terry Racerback Tank - Sizes

XS - XL (Select Colours: 2XL)

	Black	White	Cancun	Cardinal	Dark Grey	Heather Grey	Hot Pink	Indigo	Kelly Green	Light Orange	Midnight Navy	Military Green	Mint	Purple Rush	Red	Royal	Tahiti Blue
1533	●	●	●	●	●	●	●	●	●	●	●	●	●	●	●	●	●
1540	③	③	●	●	③	●	●	●	●	●	●	●	●	●	●	●	●
6633	●	●	●	●	●	●	●	●	●	●	●	●	●	●	●	●	●
6933	②	②	●	●	②	●	●	●	●	●	●	●	●	●	●	●	●

● Style is stocked in this colour

③ Style is stocked in additional sizes (3=3XL)

③/4 3XL & 4XL

② Style is stocked in additional sizes (2=2XL)



## TRI-BLEND

32 Single 145g / 7.1 oz  
50% Polyester / 25% Rayon /  
25% Combed Ring-Spun Cotton

Our perfect blend tri-blend is incredibly soft with great drape, stretch, and recovery. It's offered in a variety of styles with an awesome vintage look.



6010, 6310, 6710



6740

6040

**6010 Men's Tri-Blend Crew** - Sizes: XS - 2XL (Select Colours: 3XL)

**6710 Women's Tri-Blend Crew** - Sizes: S - 2XL

**6040 Men's Tri-Blend V** - Sizes: S - 2XL

**6740 Women's Tri-Blend Deep V** - Sizes: S - 2XL

**6310 Youth Tri-Blend Crew** Sizes: XS (4-5) - XL (14-16)

	Envy	Heather White	Indigo	Macchiato	Military Green	Purple Rush	Premium Heather	Tahiti Blue	Venetian Grey	Vintage Black	Vintage Lilac	Vintage Navy	Vintage Pink	Vintage Purple	Vintage Red	Vintage Royal	Vintage Turquoise
6010	●	3	●	3	●	●	3	●	●	3	●	3	●	●	●	●	●
6310	●	●	●	●	●	●	●	●	●	●	●	●	●	●	●	●	●
6710	●	●	●	●	●	●	●	●	●	●	●	●	●	●	●	●	●
6040	●	●	●	●	●	●	●	●	●	●	●	●	●	●	●	●	●
6740	●	●	●	●	●	●	●	●	●	●	●	●	●	●	●	●	●

● Style is stocked in this colour

3 Style is stocked in additional sizes (3=3XL)

3/4 3XL & 4XL

2 Style is stocked in additional sizes (2=2XL)



6051



6730



6733

**6051 Unisex Tri-Blend 3/4 Raglan - Sizes XS -**

2XL Select Colours: 3XL

**6733 Women's Tri-Blend Racerback Tank -**

Sizes: XS - 2XL

**6730 Women's Tri-Blend Scoop - Sizes: S - 2XL**

6051	3	3	3	3				3				3				3	
SLEEVES	PREMIUM HEATHER	ENVY	VINTAGE BLACK	VINTAGE NAVY	VINTAGE RED	VINTAGE ROYAL	INDIGO	PREMIUM HEATHER	PURPLE RUSH	TAHITI BLUE	VENETIAN GREY	VINTAGE BLACK	VINTAGE PINK	VINTAGE PURPLE	VINTAGE RED	VINTAGE ROYAL	
BODY	VINTAGE BLACK	PREMIUM HEATHER	PREMIUM HEATHER	PREMIUM HEATHER	PREMIUM HEATHER	PREMIUM HEATHER	HEATHER WHITE	HEATHER WHITE	HEATHER WHITE	HEATHER WHITE	HEATHER WHITE	HEATHER WHITE	HEATHER WHITE	HEATHER WHITE	HEATHER WHITE	HEATHER WHITE	

6730	ENVY	Heather White	INDIGO	MACCHIATO	MILITARY GREEN	PURPLE RUSH	PREMIUM HEATHER	TAHITI BLUE	VENETIAN GREY	VINTAGE BLACK	VINTAGE NAVY	VINTAGE PINK	VINTAGE PURPLE	VINTAGE RED	VINTAGE ROYAL	VINTAGE SHOCKING PINK	VINTAGE TURQUOISE
------	------	---------------	--------	-----------	----------------	-------------	-----------------	-------------	---------------	---------------	--------------	--------------	----------------	-------------	---------------	-----------------------	-------------------

6733																	
------	--	--	--	--	--	--	--	--	--	--	--	--	--	--	--	--	--

● Style is stocked in this colour    3 ● Style is stocked in additional sizes (3=3XL)    3/4 3XL & 4XL    2 ● Style is stocked in additional sizes (2=2XL)



NEXT LEVEL APPAREL™

## DENIM FLEECE

250g / 12.3 oz  
52% Cotton / 48% Polyester

Inspired by your favourite pair of jeans, our heather denim-inspired fleece gives these modern styles a cool, vintage vibe.

9801+9800



**9801** Women's Denim Fleece Jogger - Sizes: XS -2XL

**9800** Men's Denim Fleece Jogger - Sizes: S -2XL

	Black	Navy
9800	<input checked="" type="radio"/>	<input type="radio"/>
9801	<input type="radio"/>	<input checked="" type="radio"/>



● Style is stocked in this size. 1 Style is stocked in 3 sizes. 2 Style is stocked in additional sizes (2=2XL) 3 Style is stocked in 4 sizes (3=3XL) 4 Style is stocked in 5 sizes (3=3XL) 5 Style is stocked in 6 sizes (3=3XL) 6 Style is stocked in 7 sizes (3=3XL) 7 Style is stocked in 8 sizes (3=3XL) 8 Style is stocked in 9 sizes (3=3XL) 9 Style is stocked in 10 sizes (3=3XL) 10 Style is stocked in 11 sizes (3=3XL) 11 Style is stocked in 12 sizes (3=3XL) 12 Style is stocked in 13 sizes (3=3XL) 13 Style is stocked in 14 sizes (3=3XL) 14 Style is stocked in 15 sizes (3=3XL) 15 Style is stocked in 16 sizes (3=3XL) 16 Style is stocked in 17 sizes (3=3XL) 17 Style is stocked in 18 sizes (3=3XL) 18 Style is stocked in 19 sizes (3=3XL) 19 Style is stocked in 20 sizes (3=3XL) 20 Style is stocked in 21 sizes (3=3XL) 21 Style is stocked in 22 sizes (3=3XL) 22 Style is stocked in 23 sizes (3=3XL) 23 Style is stocked in 24 sizes (3=3XL) 24 Style is stocked in 25 sizes (3=3XL) 25 Style is stocked in 26 sizes (3=3XL) 26 Style is stocked in 27 sizes (3=3XL) 27 Style is stocked in 28 sizes (3=3XL) 28 Style is stocked in 29 sizes (3=3XL) 29 Style is stocked in 30 sizes (3=3XL) 30 Style is stocked in 31 sizes (3=3XL) 31 Style is stocked in 32 sizes (3=3XL) 32 Style is stocked in 33 sizes (3=3XL) 33 Style is stocked in 34 sizes (3=3XL) 34 Style is stocked in 35 sizes (3=3XL) 35 Style is stocked in 36 sizes (3=3XL) 36 Style is stocked in 37 sizes (3=3XL) 37 Style is stocked in 38 sizes (3=3XL) 38 Style is stocked in 39 sizes (3=3XL) 39 Style is stocked in 40 sizes (3=3XL) 40 Style is stocked in 41 sizes (3=3XL) 41 Style is stocked in 42 sizes (3=3XL) 42 Style is stocked in 43 sizes (3=3XL) 43 Style is stocked in 44 sizes (3=3XL) 44 Style is stocked in 45 sizes (3=3XL) 45 Style is stocked in 46 sizes (3=3XL) 46 Style is stocked in 47 sizes (3=3XL) 47 Style is stocked in 48 sizes (3=3XL) 48 Style is stocked in 49 sizes (3=3XL) 49 Style is stocked in 50 sizes (3=3XL) 50 Style is stocked in 51 sizes (3=3XL) 51 Style is stocked in 52 sizes (3=3XL) 52 Style is stocked in 53 sizes (3=3XL) 53 Style is stocked in 54 sizes (3=3XL) 54 Style is stocked in 55 sizes (3=3XL) 55 Style is stocked in 56 sizes (3=3XL) 56 Style is stocked in 57 sizes (3=3XL) 57 Style is stocked in 58 sizes (3=3XL) 58 Style is stocked in 59 sizes (3=3XL) 59 Style is stocked in 60 sizes (3=3XL) 60 Style is stocked in 61 sizes (3=3XL) 61 Style is stocked in 62 sizes (3=3XL) 62 Style is stocked in 63 sizes (3=3XL) 63 Style is stocked in 64 sizes (3=3XL) 64 Style is stocked in 65 sizes (3=3XL) 65 Style is stocked in 66 sizes (3=3XL) 66 Style is stocked in 67 sizes (3=3XL) 67 Style is stocked in 68 sizes (3=3XL) 68 Style is stocked in 69 sizes (3=3XL) 69 Style is stocked in 70 sizes (3=3XL) 70 Style is stocked in 71 sizes (3=3XL) 71 Style is stocked in 72 sizes (3=3XL) 72 Style is stocked in 73 sizes (3=3XL) 73 Style is stocked in 74 sizes (3=3XL) 74 Style is stocked in 75 sizes (3=3XL) 75 Style is stocked in 76 sizes (3=3XL) 76 Style is stocked in 77 sizes (3=3XL) 77 Style is stocked in 78 sizes (3=3XL) 78 Style is stocked in 79 sizes (3=3XL) 79 Style is stocked in 80 sizes (3=3XL) 80 Style is stocked in 81 sizes (3=3XL) 81 Style is stocked in 82 sizes (3=3XL) 82 Style is stocked in 83 sizes (3=3XL) 83 Style is stocked in 84 sizes (3=3XL) 84 Style is stocked in 85 sizes (3=3XL) 85 Style is stocked in 86 sizes (3=3XL) 86 Style is stocked in 87 sizes (3=3XL) 87 Style is stocked in 88 sizes (3=3XL) 88 Style is stocked in 89 sizes (3=3XL) 89 Style is stocked in 90 sizes (3=3XL) 90 Style is stocked in 91 sizes (3=3XL) 91 Style is stocked in 92 sizes (3=3XL) 92 Style is stocked in 93 sizes (3=3XL) 93 Style is stocked in 94 sizes (3=3XL) 94 Style is stocked in 95 sizes (3=3XL) 95 Style is stocked in 96 sizes (3=3XL) 96 Style is stocked in 97 sizes (3=3XL) 97 Style is stocked in 98 sizes (3=3XL) 98 Style is stocked in 99 sizes (3=3XL) 99 Style is stocked in 100 sizes (3=3XL)





## MOCK TWIST JERSEY

20 Single 175g / 8.6 oz  
60% Combed Ring-Spun Cotton  
40% Polyester

A soft and silky hand with a snowy, heathered look that is perfect for athleisure and lifestyle markets.



## PCH FLEECE

250g / 12.3 oz  
60% Cotton / 40% Polyester

This mid-weight heathered fleece is very soft and durable.



2021



9300

### 2021 Mock Twist Unisex Raglan Hoody

- Sizes: XS - 2XL

### 9300 Unisex PCH Hooded Pullover Sweatshirt

- Sizes: XS - 2XL

	Heather Black	Heather Grey	Heather Maroon	Heather Midnight Navy	Heather Military Green	BLACK
2021	<input checked="" type="checkbox"/>	<input type="checkbox"/>	<input type="checkbox"/>	<input type="checkbox"/>	<input type="checkbox"/>	<input type="checkbox"/>
9300	<input type="checkbox"/>	<input type="checkbox"/>	<input type="checkbox"/>	<input type="checkbox"/>	<input type="checkbox"/>	<input type="checkbox"/>

Style is stocked in this colour

3 Style is stocked in additional sizes (3=3XL)

3/4 3XL & 4XL

2 Style is stocked in additional sizes (2=2XL)

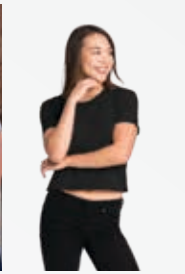
# Special Order Collection



4210 - Unisex Eco Performance Tee P. 10



4600 - Unisex Eco Heavyweight Tee P.11



5080 - Women's Festival Cali Crop P. 13



5033 - Women's Festival Tank P. 14



5013 - Women's Festival Muscle Tank P. 15



5040 - Women's Festival Sleeveless V P. 16



5030 - Women's Festival Scoop P. 17



6200 - Poly/Cotton Crew P. 19



2021 - Mock Twist Raglan Hoody P. 20-21



2022 - Mock Twist Short Sleeve Hoody P. 20-21



2050 - Men's Mock Twist Raglan Crew P. 20-21



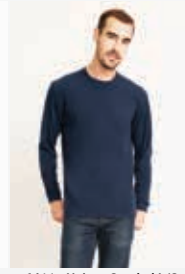
6410 - Premium Fitted Sueded Crew P. 23



6440 - Premium Fitted Sueded V P. 24



6480 - The Sueded V P. 25



6411 - Unisex Sueded L/S Crew P. 26



6491 - The Sueded Hooded Zip P. 27



6010 - Tri-Blend Crew P. 30-31



6310 - Youth Tri-Blend Crew P. 30-31



6710 - Women's Tri-Blend Crew P. 30-31



6740 - Women's Tri-Blend Deep V P. 32



6040 - Men's Tri-Blend V P. 33



6760 - Tri-Blend Dolman P. 34



6730 - Women's Tri-Blend Scoop P. 35



6733 - Tri-Blend Racerback Tank P. 36



6734 - Tri-Blend Racerback Tank Dress P. 37



6731 - Tri-Blend L/S Scoop P. 38



6071 - Men's Tri-Blend L/S Crew P. 39



6072 - Men's Tri-Blend L/S Henley P. 40



6021 - Unisex Tri-Blend L/S Hoody P. 41



6051 - Unisex Tri-Blend 3/4 Raglan P. 42-43



7410 - Garment Dyed S/S Crew P. 45



7401 - Garment Dyed L/S Crew P. 46



7433 - Garment Dyed Tank P. 47



7415 - Garment Dyed S/S Pocket Crew P. 48



7451 - Garment Dyed L/S Pocket Crew P. 48



7410S - Power Crew P. 49



7415S - Power Pocket Crew P. 50



7433S - Power Tank P. 50



7401S - Power L/S Crew P. 51



7451S - Power L/S Pocket Crew P. 51



3904 - Women's Ringer Tee P. 53



3604 - Men's Ringer Tee P. 54-55



3650 - Unisex S/S Raglan Tee P. 56-57



3600 - Premium Fitted S/S Crew P. 60



6210 - Premium Fitted CVC Crew P. 61



3900 - The Boyfriend Tee P. 62



6610 - The CVC Crew P. 63



3310 - Boy's Premium S/S Crew P. 64

See Price List and U.S. Catalogue for details  
 Special Orders must be multiples of 6 pcs per sku (same size, same colour)



3312 - Boy's Premium CVC S/S Crew P. 64



3710 - Girl's Princess Tee P. 65



3712 - Girl's Princess CVC Tee P. 65



3352 - Youth CVC 3/4 Raglan P. 66



3110 - Toddler Tee P. 67



3200 - Premium Fitted S/S V P. 68



3633 - Premium Fitted Jersey Tank P. 68



6233 - Premium Fitted CVC Tank P. 69



6240 - Premium Fitted CVC V P. 69



3940 - Women's Relaxed V P. 70



6640 - The CVC Deep V P. 71



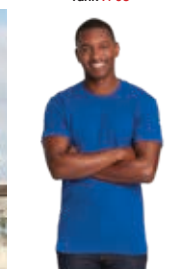
3601 - Premium Fitted L/S Crew P. 72



3602 - Long Body Crew (Urban Tee) P. 72



3605 - Unisex Pocket Crew P. 73



3600A - Men's Cotton Crew (USA Made) P. 74-75



3900A - Women's Boyfriend Tee (USA Made) P. 74-75



6010A - Men's Tri-Blend Crew (USA Made) P. 74-75



1510 - Women's Ideal Crew P. 76-77



1533 - Women's Ideal Racerback Tank P. 76-77



1540 - Women's Ideal V P. 76-77



1534 - Women's Ideal Color-block Racerback Tank P. 78



1530 - Women's Ideal Flow Tee P. 79



1560 - Women's Ideal Dolman P. 80



6360 - Women's Roll Sleeve Dolman P. 81



6338 - Gathered Racerback Tank P. 82



6333 - Men's Muscle Tank P. 83



6521 - The Burnout Hoody P. 84



6533 - Burnout Racerback Tank P. 84



3533 - Women's Spandex Tank P. 85



6633 - The Jersey Racerback Tank P. 85



6951 - Terry Raw Edge 3/4 Sleeve Raglan P. 86



6931 - The Terry L/S Scoop P. 87



6933 - The Terry Racerback Tank P. 87



8201 - Unisex L/S Thermal P. 88



8221 - Unisex L/S Thermal Hoody P. 89



9301 - The French Terry Hooded Pullover P. 90-91



9601 - French Terry Hooded Zip P. 92



9000 - The French Terry Raglan Crew P. 93



9001 - Unisex Crew W/ Pocket P. 94



9303 - Unisex Pullover Hoody P. 95



9602 - Unisex Zip Hoody P. 96



9103 - Youth Zip Hoody P. 97



9600 - The Denim Fleece Hooded Zip P. 98



9800 - Men's Denim Fleece Jogger P. 99



9801 - Women's Denim Fleece Jogger P. 99



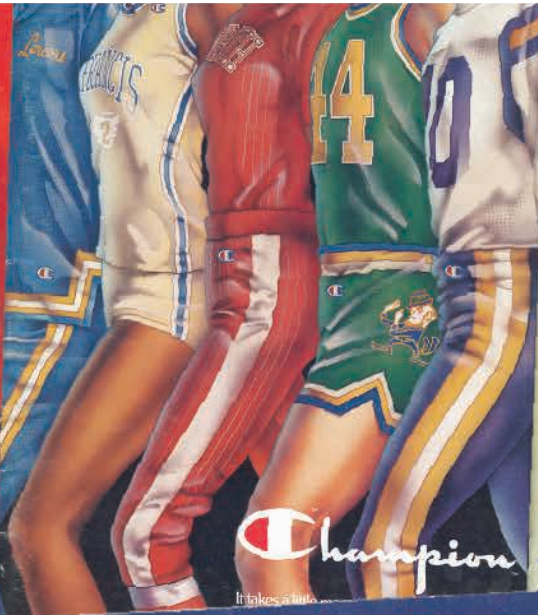
9603 - Women's PCH Raglan Zip Hoody P. 100



9300 - The PCH Hooded Pullover Sweatshirt P. 101



9700 - Unisex PCH Bomber Jacket P. 102-103



IT TAKES A LITTLE MORE TO MAKE A CHAMPION

**DRUGS**  
**SWIMMING**  
**WRESTLING**  
**WARM-UPS**  
**PHYSICAL EDUCATION**  
**SPORTSWEAR**  
**JACKETS**

athletic wear and physical education uniforms 1978

**ATHLETIC KNIT GOODS CATALOG 1953**

WRITE FOR CATALOG OF SPORTSWEAR, PES SPREAD, CHEERLEADER, BAND AND JEWELRY-MAKING TOOLS.

BUY DIRECT

**Champion**

KNITWEAR CO., INC. ROCHESTER, N.Y. 14607

**CAMPUS WEAR CATALOG 1965**

**1975**

ATHLETIC WEAR & PHYSICAL EDUCATION UNIFORMS

**1966**  
**Champion**  
KNITWEAR  
ATHLETIC CATALOG

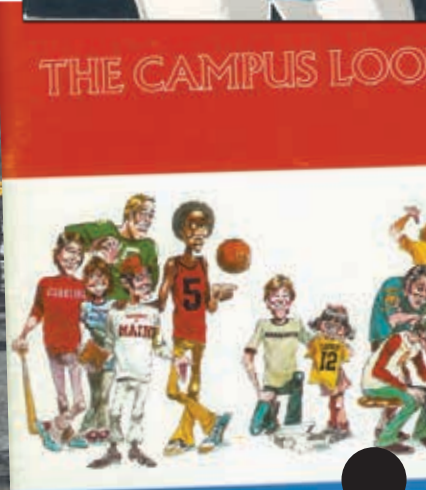
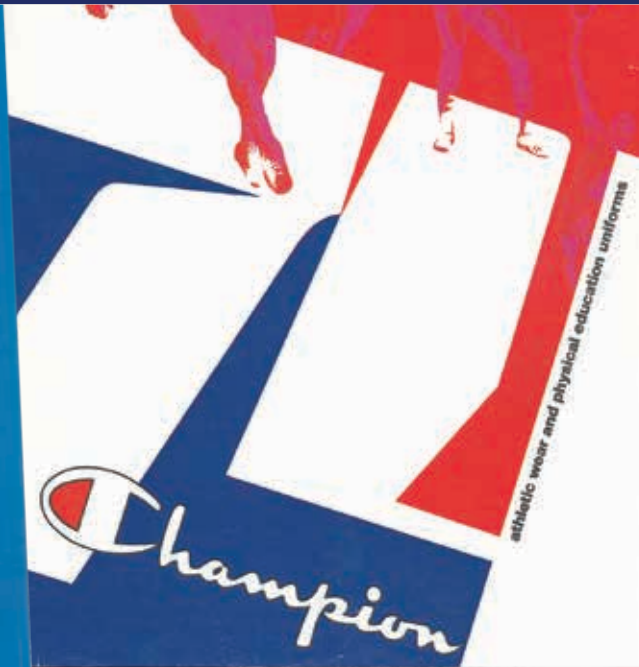
**Champion**  
PRODUCTS, INC.

It takes a little more to make a Champion

**TEAM UP WITH CHAMPION FOR FALL '81**

**NEW!**  
THE PROFESSIONAL COLLECTION... PLUS TEN OTHER GREAT NEW STYLES.

# JOIN THE LEGACY





**Champion® is Authentic Athleticwear.** Founded in Rochester, New York in 1919, the Champion brand began with an acute focus on outfitting athletes. Over the last 100 years, Champion has transcended the field, the gym, the studio and the street. Champion embodies authentic athleticwear and dares everyone to be a Champion. Join us as we celebrate 100 years of innovation and uncompromising quality. **Champion – 100 YEARS FOR THE TEAM™**

# Champion THE BEGINNING TO THE FUTURE



## 1919-1960

In 1919, the Feinbloom brothers established the company that would become known as "Champion".

## 1961-1970

The redesigned logo, the now familiar "C" mark, appeared for the first time and it was affixed from then on to the left sleeve of the sweatshirt.

## 1971-1989

Champion became famous for creating one of the most important athletic garments of the 20th century, the Hooded Sweatshirt.

## 1990-2000

Champion further strengthened its position at the forefront of American sport by acquiring the exclusive rights to be the official outfitter of all 27 teams of the National Basketball Association.

## 2001-TODAY

The iconic Champion "C" logo, was introduced to a new generation of consumers proving yet again that there can be many contenders, but only one Champion.

## THE FUTURE

Champion expands their line of sportswear to teams around the globe.





# ORIGINALS

The Champion® athletic heritage continues to inspire. Made for the active lives and casual fashion sense of today's on-the-go men and women, Champion® Originals is a collection available in carefully chosen contemporary colours. Featuring soft-wash, triblend and fleece fabrics, this collection is specifically designed to be worn at the intersection of sport and life.



## A0300 Triblend Varsity Tee

- 155g, 7.6 oz., 60/30/10 Polyester/Cotton/Rayon Jersey
- Distressed printed stripes on sleeves in a natural colour
- 1x1 rib collar
- Natural-colour, woven-twill shoulder-to-shoulder taping
- Single-needle stitched armholes
- Double-needle stitched sleeves and bottom hem
- Champion "C" logo wrap label on left sleeve
- S - 2XL



## A0350 Women's Triblend Varsity Tee

- 155g, 7.6oz., 60/30/10 Polyester/Cotton/Rayon Jersey
- Distressed printed stripes on sleeves
- V-neck with self-fabric collar and scooped bottom hem
- Natural-colour, woven-twill, back of neck display
- Single-needle stitched armholes
- Scooped bottom hem
- Shaped shirtail hem with double-needle stitching
- Champion "C" logo wrap label on left sleeve
- S - 2XL

Athletic Royal Heather W/ Nat Stripe (K7)	Black W/Nat Stripe (K2)	Carmine Red Heather W/ Nat Stripe (K8)	Charcoal Heather W/ Nat Stripe (KE)	Navy Heather W/ Nat Stripe (K6)	Oxford Grey/W/ Nat Stripe (KC)
●	●	●	●	●	●

Athletic Royal Heather W/ Nat Stripe (Q7)	Black W/Nat Stripe (Q4)	Carmine Red Heather W/ Nat Stripe (Q9)	Charcoal Heather W/ Nat Stripe (QE)	Navy Heather W/ Nat Stripe (Q6)	Oxford Grey/W/ Nat Stripe (QC)
●	●	●	●	●	●

**Champion**

● Style is stocked in this colour

3 ● Style is stocked in additional sizes (3=3XL)





### A0500 Sueded Fleece Crew

- 285g, 14oz., 80/20 Cotton/Polyester
- 2x2 rib collar, cuffs, waistband and V-Notch
- Natural-colour, woven-twill, back of neck display
- Forward shoulders
- Triple-needle stitching throughout
- Relaxed waistband
- 100% cotton face
- Champion "C" embroidery in natural colour on left sleeve
- S – 2XL



### A0380 Long Sleeve Henley

- 160g, 7.86 oz., 100% Ring-Spun Cotton Slub Jersey
- 4-button placket with natural-coloured buttons
- Self-fabric contrasting inner placket
- 1x1 rib collar
- Raglan sleeves
- Open cuffs with double-needle hems
- Shaped shirtail hem with double-needle stitching
- Champion "C" logo wrap label on left sleeve
- S – 2XL

### A0600 Sueded Fleece Pullover Hood



- 285g, 14oz., 80/20 Cotton/Polyester
- Jersey-lined hood in Oatmeal Heather
- Forward shoulders
- Flat-woven drawcords with ends turned and tacked
- 2x2 rib cuffs and waistband
- Natural-colour, woven-twill, back of neck display
- Triple-needle stitching throughout
- Relaxed waistband
- 100% cotton face
- Champion "C" embroidery in natural colour on left sleeve
- S – 2XL



### A0700 Sueded Fleece Jogger

- 285g, 14oz., 80/20 Cotton/Polyester
- Front entry pockets with jersey-lined pocket bags
- Self-fabric waistband with encased elastic
- Flat-woven drawcords with ends turned and tacked
- Triple-needle stitched outseam
- Stitched mock fly
- Back pocket with ribbed welt
- 2x2 rib cuffs
- 100% cotton face
- Champion "C" embroidery in natural colour on left hip
- S – 2XL

	Black (BK)	Carmin Red (RF)	Charcoal Heather (HL)	Navy (NY)	Navy Heather (N2)	Oxford Grey (OX)	Oxford Grey/Oatmeal Heather (ZZ)
A0500	●		●		●		
A0600	●		●		●		●
A0380	●	●	●	●		●	
A0700	●		●			●	

● Style is stocked in this colour

③ Style is stocked in additional sizes (3=3XL)



# Women's French Terry

Style meets comfort with Champion's women's french terry collection.



**A0650 Women's French Terry Zip Hood**

- 250g, 12.3oz., 43/43/14 rayon/ polyester/cotton french terry
- Scuba hood
- Raglan armholes
- Jersey-lined on seam pockets
- Exposed metal zipper with natural-coloured zipper tape
- 1x1 rib cuffs and waistband with spandex
- Flat-woven drawcords with ends turned and tied
- Longer length for comfort and coverage
- Champion "C" logo embroidery in natural colour on left sleeve
- S - XL

\* Available Now



**New**

**A0750 Women's French Terry Jogger**

- 250g, 12.3oz., 43/43/14 rayon/ polyester/cotton french terry
- Jersey-lined on seam pockets
- 29" inseam
- 1x1 rib cuffs and waistband with spandex
- Flat-woven drawcords with ends turned and tied
- Drawcords are natural colored
- Champion "C" logo embroidery in natural colour on left hip
- S - XL

\* Available Now

**New**



**New**



**A0550 Women's French Terry Crew**

- 250g, 12.3oz., 43/43/14 rayon/ polyester/cotton french terry
- Fashion boatneck
- Raglan armholes
- 1x1 rib cuffs and waistband with spandex
- Natural-colour, woven-twill, back of neck display
- Longer length for comfort and coverage
- Champion "C" logo embroidery in natural colour on left sleeve
- S - XL

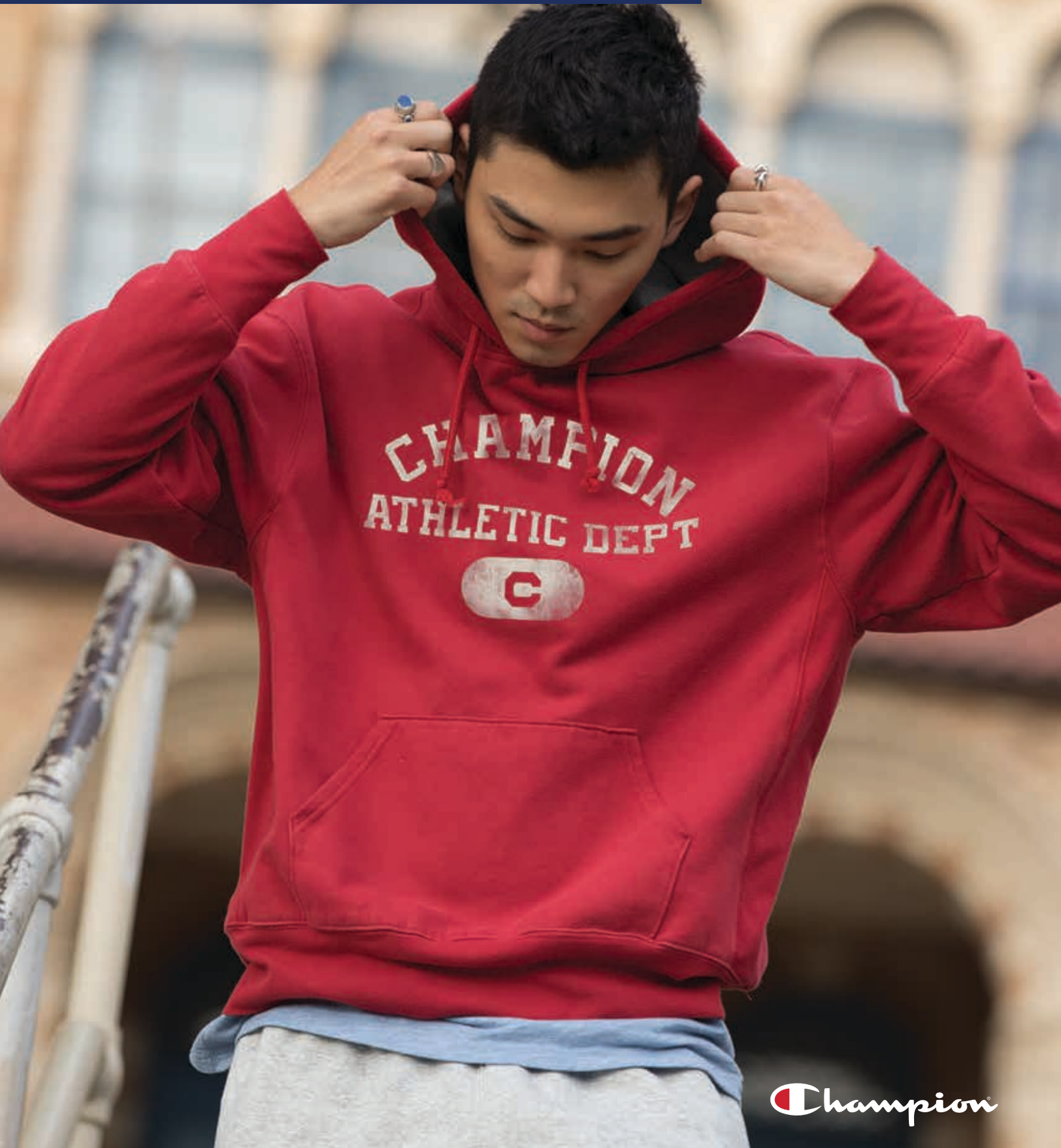
\* Available Now

	Black (BK)	Carmin Red (RT)	Charcoal Heather (HL)	Navy Heather (N2)
A0550	●	●	●	●
A0650	●		●	
A0750	●		●	

● Style is stocked in this colour    ③ Style is stocked in additional sizes (3=3XL)

# AUTHENTICS

Champion Authentics garments have a timeless look that is rich in athletic heritage. As pioneers of the heavyweight sweatshirt and the brand that put the hoodie on the map, Champion has always had innovation at its core. For 100 years, Champion® has been the brand of choice because of our reputation for functionality, quality and durability.



 *Champion*



# Powerblend ECO<sup>®</sup> Fleece 15oz/305g

The environmentally conscious fleece collection made with up to 5% recycled polyester. All Powerblend sweats feature Air-Jet Polyester for a softer hand, improved durability and less fabric pilling.

Champion's Double Dry<sup>®</sup> technology wicks moisture away from the body and controls moisture build-up to help keep you dry. Now that's being proactive while being active!

Powerblend ECO<sup>®</sup> fleece keeps millions of plastic bottles out of landfills annually!

IT IS TRULY A FEEL GOOD FLEECE!



## S750 Powerblend ECO<sup>®</sup> Colour Block Fleece Hood

**BODY:** 50% Cotton / 50% Polyester with Wicking Finish

**RIB:** 49% Cotton / 49% Polyester / 2% Spandex

### FEATURES

- Double Dry<sup>®</sup> fabric wicks moisture away from the body and helps control moisture buildup
- Front pouch pocket with bartacks for durability
- Two-ply hood with matching drawstring
- 1x1 rib with spandex
- Cover stitching throughout
- "C" logo on left sleeve
- S - 2XL



● Style is stocked in this colour

③ Style is stocked in additional sizes (3=3XL)



Sizes: S - 3XL

### S700 Powerblend ECO® Fleece Hood

**BODY:** 50% Cotton / 50% Polyester with Wicking Finish

**RIB:** 49% Cotton / 49% Polyester / 2% Spandex

#### FEATURES

- Double Dry® fabric wicks moisture away from the body and helps control moisture buildup
- Front pouch pocket with bartacks for durability
- Two-ply hood with matching drawstring
- 1x1 rib with spandex
- Cover stitching throughout
- "C" logo on left sleeve
- Youth Companion style S790



Sizes: S - 3XL

### S600 Powerblend ECO® Fleece Crew

**BODY:** 50% Cotton / 50% Polyester with Wicking Finish

**RIB:** 49% Cotton / 49% Polyester / 2% Spandex

#### FEATURES

- Double Dry® fabric wicks moisture away from the body and helps control moisture buildup
- 1x1 rib with spandex
- Double-needle stitching
- Set-in armholes
- "C" logo on left sleeve
- Youth Companion style S690



Sizes: S - 3XL

### S800 Powerblend ECO® Fleece Zip Hood

**BODY:** 50% Cotton / 50% Polyester with Wicking Finish

**RIB:** 49% Cotton / 49% Polyester / 2% Spandex

#### FEATURES

- Double Dry® fabric wicks moisture away from the body and helps control moisture buildup
- Front pouch pocket with bartacks for durability
- Two-ply hood with matching drawstring
- 1x1 rib with spandex
- Double-needle stitching
- Set-in armholes
- "C" logo on left sleeve
- Youth Companion style S890

	BK - Black	WH - White	HL - Charcoal Heather	14 - Dark Green	DH - Dark Green Heather	GO - Gold	LB - Light Blue	LW - Light Steel	MR - Maroon	UA - Maroon Heather	NY - Navy	N2 - Navy Heather	ON - Orange	PR - Purple	RB - Royal	RH - Royal Blue Heather	SK - Scarlet	S9 - Scarlet Heather	SV - Silver Grey
S700	3	3	3	3	3	3	3	3	3	3	3	3	3	3	3	3	3	3	3
S600	3	3	3	3	3	3	3	3	3	3	3	3	3	3	3	3	3	3	3
S800	3		3	3				3	3		3				3			3	

● Style is stocked in this colour

③ Style is stocked in additional sizes (3=3XL)



### P800 / P900 / 70053BU Powerblend ECO® Fleece Pants

**BODY:** 50% Cotton / 50% Polyester

#### FEATURES

- Double Dry® fabric wicks moisture away from the body and helps control moisture buildup
- Covered elastic waistband with inside drawcord
- Double-needle stitching
- Pockets (P800 & 70053BU)
- "C" logo on left leg
- Youth companion styles: P900/P790, P800/P890



**P800**

Sizes: S - 3XL



**P900**

Sizes: S - 2XL (Select Colours: 3XL<sup>2</sup>)



**70053BU (Formerly P1022)**

Sizes: S - 2XL

	BK -Black	HL - Charcoal Heather	LW - Light Steel	NY - Navy	RB - Royal	SK - Scarlet
P800	3	3	3	3		
P900	3	3	3	3		

	003 -Black	G61 - Granite Heather	WDP - Navy Heather	806 - Oxford Grey
70053BU	●	●	●	●

● Style is stocked in this colour    3 Style is stocked in additional sizes (3=3XL)



# Youth Powerblend Eco® Fleece



**S890** Sizes: S - XL



**S790** Sizes: S - XL



**S690** Sizes: S - XL

## S690/ S790 / S890 Youth Powerblend Eco® Fleece Tops

**BODY:** 50% Cotton / 50% Polyester

**RIB:** 49% Cotton / 49% Polyester / 2% Spandex

### FEATURES

- Double Dry® fabric wicks moisture away from the body and helps control moisture buildup
- 1x1 rib with spandex
- Double-needle stitching
- Two-ply hood (**S790/S890**)
- Front pouch pocket with bartacks for durability (**S790/S890**)
- "C" logo on left sleeve



**P790** Sizes: S - XL



**P890** Sizes: S - XL

## P790 / P890 Youth Powerblend Eco® Fleece Pants

**BODY:** 50% Cotton / 50% Polyester

### FEATURES

- Double Dry® fabric wicks moisture away from the body and helps control moisture buildup
- Covered elastic waistband
- Double-needle stitching
- "C" logo on left leg

	BK - Black	HL - Charcoal Heather	14 - Dark Green	LW - Light Steel	MR - Maroon	NY - Navy	RB - Royal	SK - Scarlet
S690	●		●	●		●	●	●
S790	●	●	●	●	●	●	●	●
S890	●			●		●		
P790	●			●		●	●	●
P890	●			●		●		

● Style is stocked in this colour

③ Style is stocked in additional sizes (3=3XL)



# Reverse Weave® Fleece

It doesn't get much more authentic. For 80 years, Champion Reverse Weave® fleece has set the standard for heavyweight durability, comfort, and style.



Sizes: S - 2XL

## RW10 Reverse Weave® Pant

82% Cotton / 18% Polyester

### FEATURES

- 20oz / 405gsm
- Rib gusset in crotch
- Loose elastic cuffs
- Full athletic fit
- Side pockets
- Covered elastic waistband with cotton drawcord
- "C" logo at left hip

New Colours



S101 Hood Sizes: S - 2XL (Select Colours 3XL\*)

New Colours



S149 Crew Sizes: S - 2XL (Select Colours 3XL\*)

## S101 / S149 Reverse Weave® Hood/Crew

82% Cotton / 18% Polyester

### FEATURES

- 20oz / 405gsm
- Four-sided sewn down label
- 1x1 ribbed knit side gussets
- Double-needle stitching on body, collar, armholes, cuffs and waistband
- 3 3/4" wide 1x1 ribbed knit cuffs and waistband
- Full athletic fit
- "C" logo on left sleeve

	BK - Black	14 - Dark Green	MR - Maroon	NY - Navy	OX - Oxford Grey	SK - Scarlet	SV - Silver Grey
RW10	●				●		
S149	③	●	●	●	③	●	●
S101	③	●	●	●	③	●	●

● Style is stocked in this colour    ③ Style is stocked in additional sizes (3=3XL)





# Classic Jersey

The 100% cotton classics that never go out of style.



**T425** Sizes: S - 3XL



**T435 Youth** Sizes: S - XL



Sizes: S - 2XL



**T137** Sizes: S - 3XL



**New Colours**

**T13Y Youth** Sizes: S - XL

## T425 / T435 Short Sleeve Tee

**BODY:** 100% Cotton

**LIGHT STEEL:** 90% Cotton / 10% Polyester

### FEATURES

- 9.8oz / 200gsm
- Taped crew neck
- Tag free
- Two-needle stitched bottom and sleeves
- "C" logo on left sleeve

## CC8C Long Sleeve Tee

**BODY:** 100% Cotton

**LIGHT STEEL:** 90% Cotton / 10% Polyester

### FEATURES

- 8.6oz / 175gsm
- Taped crew neck
- Tag free
- Ribbed cuffs
- "C" logo on left sleeve

## T137 / T13Y Raglan Tee

**BODY:** 100% Cotton

**RIB:** 90% Cotton / 10% Polyester

### FEATURES

- 8.6oz / 175gsm
- Contrast rib collar and sleeves
- Tag free
- Two-needle stitched bottom and sleeves
- Exterior jocktag at left hem
- "C" logo on left sleeve

	BK - Black	WH - White	AS - Ash	HL - Charcoal Heather	14 - Dark Green	GO - Gold	LW - Light Steel	MR - Maroon	NY - Navy	ON - Orange	PR - Purple	RR - Red	RB - Royal
T425	3	3	3	3	3	3	3	3	3	3	3	3	3
T435	●	●	●	●	●	●	●	●	●	●	●	●	●
CC8C	●	●	●	●	●	●	●	●	●	●	●	●	●

	3	3	3	3	3	3	3	3	3
T137	3	3	3	3	3	3	3	3	3
T13Y	●	●	●	●	●	●	●	●	●
Body	8B - Oxford Grey	32 Oxford Grey	74 White	G4 White	W9 White	81 White	S3 White	Q1 White	
Side Panels	Black	Navy	Black	Dark Green	Maroon	Navy	Scarlet	Team Blue	

● Style is stocked in this colour

3 Style is stocked in additional sizes (3=3XL)



Size: XS - 2XL

**New**

**0348TL Women's Essential Racerback Tank**

50% Cotton/50% Polyester

- Tag free
- Loose Fit
- "C" logo on left hem

\*Available Spring 2019



Size: XS - 2XL

**New**

**0349TL Women's Allegro Keyhole Tank**

50% Polyester/50% Raylon

- Loose fit
- Scoop neck with keyhole racerback
- "C" logo on left hem

\* Available Spring 2019

	BK - Black	WH - White	GPH - Graphite	NY - Navy	PR - Purple	RR - Red	SGH - Steel Grey Heather	6A - WOW Pink
0348TL	●	●		●	●	●	●	●
0349TL	●		●	●				

● Style is stocked in this colour

③ Style is stocked in additional sizes (3=3XL)



# PERFORMANCE

Athletic performance apparel runs right through the heart of our DNA. From Olympic teams to everyday athletes, we believe everyone has the heart of a Champion, and we'll help you find it. For 100 years, Champion has been a leader in sports apparel, and our guiding principles remain unchanged: a love of sport, a spirit of innovation and uncompromised quality. Join us as we celebrate **100 years for the team™**.

## VAPOR® TEES



**CV20** Sizes: S - 2XL



**CV26** Sizes: S - 2XL

### **CV20 / CV26 Champion Vapor® Tees**

**BODY:** 100% Polyester

#### **FEATURES**

- 130g, 6.4oz
- Champion® Vapor fabric wicks moisture and dries faster to keep you cool and dry
- Lightweight heather fabric that moves with you, not against you
- Flatlock seams for style and comfort
- Snag Resistant
- Champion logo neck tape
- Reflective "C" logo on left sleeve & Champion script at back next

	B7 - Black Heather	3H - Slate Grey Heather	N2 - Navy Heather
CV20	●	●	●
CV26	●	●	●

● Style is stocked in this colour

③ Style is stocked in additional sizes (3=3XL)



# Double Dry® Interlock T-Shirt

6.85oz / 140g

Featuring FreshIQ® Advanced Odor Protection technology that attacks odor-causing bacteria so you can feel fresh all day.

Double Dry® fabric wicks moisture away from the body and helps control moisture build up. Additionally, 50+ UPF provides excellent UV protection.

THEY ARE THE ULTIMATE WORKOUT TEES!



**CW22 - Men's** Sizes: S - 3XL



**CW23 Women's** Sizes: XS - 2XL



**CW24 - Youth** Sizes: S - XL



**CW26 Adult** Sizes: S - 3XL

## CW22 / CW23 / CW24/ CW26

### Essential Double Dry® Tee

**BODY:** 100% Polyester Jersey Interlock

#### FEATURES

- Self-fabric collar and neck tape
- Two-needle hem sleeves and bottom
- Cover-seamed armholes and neck for durability
- Tag free
- Reflective "C" logo on left sleeve and Champion script on back neck

	BK - Black	WH - White	14 - Dark Green	NY - Navy	PR - Purple	RB - Royal	SK - Scarlet	R7 - Stone Grey	X1 - Stone Grey Camo	6A - WOW Pink
CW22	3	3	3	3	3	3	3	3	3	
CW24	●	●		●	●			●		
CW23	●	●	●	●	●	●	●	●		●
CW26	3	3	3	3	3			3		

● Style is stocked in this colour

3 Style is stocked in additional sizes (3=3XL)



# Women's Everyday Performance

Champion® introduced the sports bra to the world over 40 years ago, and the athletic landscape was forever changed. Continuing this pioneering spirit are the latest and most advanced Champion® sports bra and women's performance bottoms yet.



**B900 ( Formerly B9504)**

### B900 Absolute Racerback Sports Bra

- 87% Polyester/13% Spandex
- SmoothTec® band resists irritation and chafe
- Double Dry™ technology wicks moisture to keep you cool and dry
- Minimal seams minimize irritation for distraction-free comfort
- Racerback silhouette ensures a free range of motion
- Reflective C logo at left chest and center back band
- XS – XL



### B940 Legging

- 250g 12.29oz., 88% Polyester/12% Spandex
- Wicking for moisture management
- Stretch for ease of movement
- Reflective C logo at bottom hem
- Fitted
- XS – 2XL



### B960 Capri

- 250g 12.29 oz., 88% Polyester/12% Spandex
- Wicking for moisture management
- Stretch for ease of movement
- Reflective C logo at bottom hem
- Fitted
- XS – 2XL

	BK - Black
B900	●
B960	●
B940	●

● Style is stocked in this colour

③ Style is stocked in additional sizes (3=3XL)



# Champion Mesh

Over 50 years ago, Champion athleticwear introduced mesh shorts and they've been an unmatched performance staple since.



**B002 Team Colour** Sizes: S - 2XL



**B002 Reversed to white**

## B002 Reversible Practice Jersey

**BODY:** 100% Polyester

### FEATURES

- Open bottom hem for ease of printing
- Team colour side insert when reversed to white
- Full athletic fit
- Champion jocktag at lower left hem on white and "C" logo on upper right chest on team colour



**CA33** Sizes: S - 2XL

## CA33 Women's Mesh Shorts

**BODY:** 100% Polyester Mesh

**LINER:** 100% Polyester Tricot

### FEATURES

- 6.2oz / 128gsm
- Tricot lining to prevent show through
- 5" inseam
- Champion logo printed roll down waistband
- "C" logo on left hem



**8731 Adult Mesh Shorts** Sizes: S - XL (Select Colours 3XL<sup>3</sup>)



**8173 Youth Mesh Shorts** Sizes: S - XL



**S162 Mesh Shorts With Pockets** Sizes: S - 2XL

## 8731 / 8173 / S162 Mesh Shorts

**BODY:** 100% Polyester

### FEATURES

- 6.2oz / 128gsm
- Multi-needle elastic waistband with inside drawcord
- Full athletic fit
- "C" logo on left hip
- 9" inseam (**8731 & S162**)
- 7" inseam (**8173**)
- Side Pockets (**S162**)
- 8173 will transition to 8212BY once 8173 is sold out

	BK - Black	34 - Athletic Grey	UF - Athletic Royal	NY - Navy	SK - Scarlet
CA33	●		●	●	●
8173	●		●	●	●
8731	3		●	3	●
S162	3	●	●	3	●

B002		BP - Black	YZ - Athletic Royal	NW - Navy	RW - Scarlet
Team Colour		●	●	●	●
Reverse Side		White	White	White	White

● Style is stocked in this colour    3 Style is stocked in additional sizes (3=3XL)



# Shorts

From the breathability of mesh to the durable comfort of cotton, Champion® shorts are made to outperform.



**8187** Sizes: S - 2XL (Select Colours 3XL\*)



**8180 (formerly 85653)** Sizes: S - 2XL

## 8187 / 8180 Classic Jersey Short

**BODY:** 100% Cotton

### FEATURES

- 10oz / 205gsm
- Exposed elastic waistband with inside drawstring
- Double-needle stitching
- Full athletic fit
- 6" inseam (**8187**)
- "C" logo on left hip (**8187**)
- 9" inseam (**8180**)
- "C" logo on left leg (**8180**)
- Side pockets (**8180**)



Sizes: XS - 2XL

**New**

## 8215BL Women's Essential Short

- 50% Cotton/50% Polyester
- Exposed soft elastic waistband with "C" branding for roll-down
  - Side Vents
  - 3" inseam

\* Available Spring 2019



Sizes: S - 2XL

**New**

## 8214BU 10" Training Short With Pockets

100% Polyester

### FEATURES

- Seam pockets
- Moisture wicking fabric
- Anti-microbial qualities
- Elastic wasteband with draw string

\* Available Spring 2019

	BK - Black	14 - Dark Green	GPH - Graphite	MR - Maroon	NY - Navy	OX - Oxford Grey	PR - Purple	RR - Red	RB - Royal	SK - Scarlet	SV - Silver	6A - WOW Pink
8180	●					●						
8187	3	●		●	3	3			●	●	●	
8215BL	●		●	●	●		●	●				●
8214BU	●				●							

● Style is stocked in this colour

3 Style is stocked in additional sizes (3=3XL)

# OUTERWEAR

Champion outwear is now stocked in men's, women's and youth in Canada! We've got a style for every customer, be it corporate or campus, pro-shops or teams. Trust Champion to keep you warm, dry and always on-trend.



**S260 Women's**

Sizes: XS - 2XL

**S270 Men's** Sizes: S - 3XL

**S260 / S270**

**Performance Fleece Full Zip Jacket**

100% Polyester

- Reverse coil zipper
- Two-ply collar with plush comfort lining
- Side pockets
- Wicking
- Reflective "C" logo on left sleeve



**New**

**CO200 Packable Anorak Jacket**

- 100% polyester micro poplin fabric
- Wind and rain resistant
- Half-zip placket
- Attached scuba collar with hood
- Elastic banding at cuffs
- Adjustable drawcords at bottom hem and hood
- Oversized kanga pocket
- Can be packed into front zip pocket
- Champion "C" logo on left sleeve
- S - 3XL

	Black (BK) (S260/S270 2P)	1G - Gold	BQ - Graphite	NY - Navy	RB - Royal Blue	SK - Scarlet
S270	3					
S260	●					
CO200	3	3	3	3	3	3

● Style is stocked in this colour

3 Style is stocked in additional sizes (3=3XL)





New



### 1553TU/TL Men's & Women's Arctic Jacket

**SHELL:** 100% Nylon

**Fill:** 45% grey duck down/55% synthetic duck down made from 100% Polyester

**FEATURES**

- On seam side entry pockets
- Elastic binding around hem and sleeve opening
- Water-resistant
- Horizontal quilting

\* Available Now

Sizes: Men's S - 3XL & Women's XS - 2XL

New



### 1715TU/TL Men's & Women's Break Out Jacket

**BODY:** 100% Polyester

**FEATURES**

- Moisture-wicking fabric
- Anti-microbial qualities
- Exposed zipper
- On-seam pockets
- Ribbed collar, cuffs, and hem

\* Available Summer 2019

Sizes: Men's S - 3XL & Women's XS - 2XL

New



### 0514BU/BL/BY Men's, Women's & Youth Surge Jogger

**BODY:** 100% Polyester

**FEATURES**

- Moisture-wicking fabric
- Anti-microbial qualities
- Relaxed hip and thigh
- Slim fitted ankle
- Branded exposed elastic waistband
- Self-fabric cuff

\* Available Spring 2019

Sizes: Men's S - 3XL, Women's XS - 2XL, Youth S - L

New



### 1714TU/TL/TY Men's, Women's & Youth Rush Jacket

**BODY:** 100% Polyester

**FEATURES**

- Water-resistant
- 3-piece adjustable hood (no drawstring in youth)
- Zippered pockets
- Elastic hem and cuffs

\* Available Spring 2019

Sizes: Men's S - 3XL, Women's XS - 2XL, Youth S - L

New



### 1714BU/BL/BY Men's, Women's & Youth Rush Pant

**BODY:** 100% Polyester

**FEATURES**

- Water-resistant
- Elastic waistband with drawstring
- Side seam pockets
- Ankle zip

\* Available Spring 2019

Sizes: Men's S - 3XL, Women's XS - 2XL, Youth S - L

	BK - Black	GBW - Graphite/Black/White
1715TU/1715TL		3
0514BU/0514BL/0514BY	3	
1714TU/1714TL/1714TY	3	
1714BU/1714BL/1714BY	3	
1553TU/1553TL	3	

● Style is stocked in this colour

3 Style is stocked in additional sizes (3=3XL)

# ACCESSORIES

Introducing Champion accessories! Now you can officially rock Champion from head to toe. Champion hats, bags and slides are the perfect finishing touch to any look.



**New**



Sizes: O/S

### 4026NN All Around Duffel Bag

100% Heavy Duty Polyester

- Large u-shaped compartment
- Front pocket with mesh organizer
- Zippered side pockets with jock tag
- Detachable and adjustable padded shoulder strap
- Heavy duty metal hardware

\* Available Now

**New**



Sizes: O/S

### 4023NN All Sport Backpack

100% Heavy Duty Polyester

- Mesh compartment
- Multi-purpose nylon strap and loop
- 2 mesh side pockets
- J-hook
- Zippered side pocket with jocktag
- Adjustable shoulder straps

\* Available Now

**New**



Sizes: O/S

### 4028NN All-Season Sling Bag

100% Polyester

- Nylon webbing carrying handles
- Drawcord closure

\* Available Now

BK - Black

4026NN	●
4023NN	●
4028NN	●

● Style is stocked in this colour

③ Style is stocked in additional sizes (3=3XL)

**New**



Sizes: XS-XL

**4203NU Slide Sandal**

- Lightweight EVA
- Slide-on design
  - Open toe
  - Signature logo detailing
  - Adjustable velcro strap with micro fibre upper

\* Available Now

**Sizing**

XS	Fits	Men's	3 - 4
S	Fits	Men's	5 - 6
M	Fits	Men's	7 - 8
L	Fits	Men's	9 - 10
XL	Fits	Men's	11 - 12

Women will need to size down two shoe sizes

**New**



Sizes: 0/S

**4102NN Stretch Fit Hat**

- 97% Cotton/3% Spandex
- 6 panel, structured, mid-profile
  - Flat bill
  - Stretch fit
  - Sewn eyelets
  - Interior sweatband

\* Available Spring 2019

**New**



Sizes: 0/S

**4100NN Trucker Mesh Hat**

- 100% Cotton
- Structured solid front panel
  - Mesh side and back panels for a breathable fit
  - Pre-curved visor
  - Adjustable plastic snapback
  - Sewn eyelets
  - Interior sweatband

\* Available Spring 2019

**New**



Sizes: 0/S

**4101NN Twill Hat**

- 100% Cotton
- Washed cotton twill
  - Pre-curved visor
  - 6 panel, unstructured, low-profile
  - Self-fabric closure with brass
  - Sewn eyelets
  - Interior sweatband

\* Available Spring 2019

	BK - Black	WH - White	FT - Forest	MR - Maroon	NY - Navy	PR - Purple	RR - Red	RB - Royal	ST - Stone	BKWH - Black/White	NYWH - Navy/White	RDWH - Red/White	ROWH - Royal/White
4203NU	●												
4102NN	●	●	●	●	●	●	●	●	●				
4101NN	●	●	●	●	●	●	●	●	●				
4100NN										●	●	●	●

● Style is stocked in this colour    ③ Style is stocked in additional sizes (3=3XL)

# Special Order Collection

3511TU + 3511BU



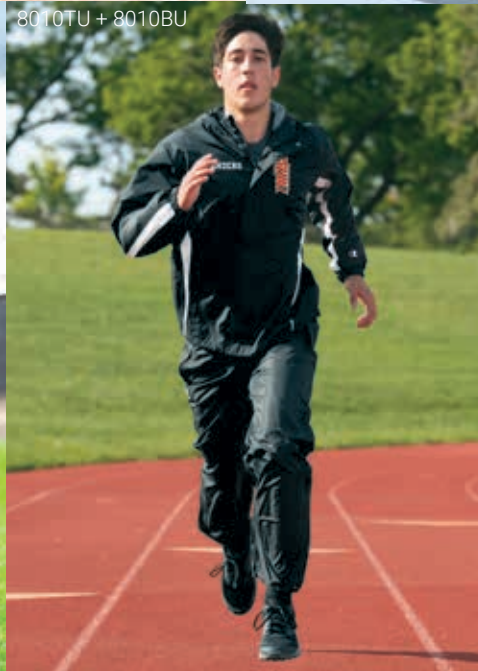
3511TL + 3511BL



1715TL + 1715BL



8010TU + 8010BU



1714TU + 1714BU + 4026NN



6002TL + SF01



5903TU + BS07 + BS00 + T425



2032TL + T761



H160 + 8581



2032TG



# Special Order **ULTRAFUSE™**

Champion's Ultrafuse sublimation program is the perfect way to create a customized look for your apparel or team uniform

U002TU + U002BU



U420TU + U272BU



U180TL + U188BL



U266TU



U706TU + U703BU



U440TU



U400NN

U300TU + U300BU

U701TU + U701BU





## WE DECORATE! LET'S MAKE IT PERSONAL!

As a one step customization shop, Catalyst Group can create an exclusive look for any order.

THE CG'S ADVANTAGE	DECORATION OPTIONS
<ul style="list-style-type: none"> <li>• One invoice</li> <li>• One contact</li> <li>• No shipping costs to and from decorator</li> <li>• No/low risk of damages</li> </ul>	<ul style="list-style-type: none"> <li>• Embroidery</li> <li>• Twill appliqué</li> <li>• Felt appliqué</li> <li>• Screen printing including specialty finishes such as:               <ul style="list-style-type: none"> <li>- Crystalina</li> <li>- Discharge</li> <li>- Foil</li> <li>- Gel</li> <li>- Glitter</li> <li>- Glow</li> <li>- High Density</li> <li>- Metallic</li> <li>- Neon</li> <li>- Puff</li> <li>- Reflective</li> <li>- Silicone</li> </ul> </li> <li>• Custom printed neck labels ( on Next Level Apparel)</li> </ul>





MEN'S SIZING						
	S	M	L	XL	2XL	3XL
<b>CHEST</b>	34 - 36	38 - 40	42 - 44	46 - 48	50 - 52	54 - 56
<b>WAIST</b>	28 - 30	32 - 34	36 - 38	40 - 42	44 - 46	48 - 50

WOMEN'S SIZING						
	XS (0 - 2)	S (4 - 6)	M (8 - 10)	L (12 - 14)	XL (16 - 18)	2XL (20 - 22)
<b>BUST</b>	32 - 33	34 - 35	36 - 37	38.5 - 40	41.5 - 43.5	45.5 - 47.5
<b>WAIST</b>	25 - 26	27 - 28	29 - 30	31.5 - 33.25	35 - 37.25	39.5 - 41.75
<b>HIP</b>	35 - 36	37 - 38	39 - 40	41.5 - 43	44.5 - 46.5	48.5 - 50.5

YOUTH SIZING				
	YS (8)	YM (10 - 12)	YL (14 - 16)	YXL (18 - 20)
<b>HEIGHT (INCHES)</b>	50 - 51	55 - 58	62 - 64	67 - 68
<b>WEIGHT</b>	55.5 - 59	73.5 - 87	100.5 - 115	126.5 - 137
<b>CHEST</b>	27	28 - 29.5	31 - 32.5	34 - 35.5
<b>WAIST</b>	24.5	24.5 - 25.5	26.5 - 27.5	28.5 - 29.5



UNISEX SIZING							
	XS	S	M	L	XL	2XL	3XL
<b>CHEST</b>	30 - 32	34 - 36	38 - 40	42 - 44	46 - 48	50 - 52	54 - 56
<b>WAIST</b>	24 - 26	28 - 30	32 - 34	36 - 38	40 - 42	44 - 46	48 - 50



Gender		XS	S	M	L	XL	2XL	3XL	4XL
Men's/Unisex (Chest)	*Garment Measurements	33" - 35"	35" - 38"	38" - 41"	43" - 44"	45" - 48"	48" - 52"	53.5" - 56"	60"
Ladies' Fitted (Chest)	*Garment Measurements		29.5"	31.5"	33.5"	36.5"	39.5"		
Ladies' Fitted (Size)			0 - 2	2 - 4	4 - 6	8 - 10	12		
Ladies' Relaxed/Classic (Chest)	*Garment Measurements	30"	32"	34"	36"	39"	42"	45.5"	
Ladies' Relaxed/Classic (Size)		0 - 2	2 - 4	4 - 6	8 - 10	12 - 14	14 - 16	18 - 20	
Ladies' Dolman/Flowy (Chest)	*Garment Measurements	35"	37"	38"	40"	44"	47"	50"	
Ladies' Dolman/Flowy (Size)		2 - 6	4 - 8	6 - 10	8 - 12	12 - 16	18 - 20	20 - 24	
Boys/Youth (Size)		4/5	6/7	8	10/12	14/16			
Girls' (Size)		3/4	6/6X	7/8	10/12	14/16			
Toddler (Size)		2T	3T	4T					
Men's Joggers (Waist)	*Garment Measurements		29"	31"	33"	35"	37"		
Men's Joggers (Inseam)	*Garment Measurements		30"	30"	30"	30.5"	31"		
Ladies' Joggers (Waist)	*Garment Measurements	26.5"	28.5"	30.5"	32.5"	34.5"	36.5"		
Ladies' Joggers (Inseam)	*Garment Measurements	27.75"	28.25"	28.25"	28.25"	28.75"	29.5"		

SIZE EQUIVALENT (Unisex Fit)	XS	S	M	L	XL	2XL	3XL	4XL
Men's	XS	S	M	L	XL	2XL	3XL	4XL
Women's	S	M	L	XL	2XL	3XL	4XL	5XL

# Index

## Timberlea

T2000 Fleece ¼ Zip

5 0514BY Youth's Surge Jogger

41 CW23 Essential Double Dry® Tee - Women's 36

T2001 Fleece Varsity Jacket

5 1553TU Men's Arctic Jacket

41 CW24 Essential Double Dry® Tee - Youth's 36

## Next Level

1533 Women's Ideal Racerback Tank

5 1553TL Women's Arctic Jacket

41 CW26 Essential Double Dry® Tee - L/S 36

1540 Women's Ideal V

1714BU Men's Rush Pant

41 P790 Youth Powerblend Eco® Fleece Pants - Closed Bottom 31

2021 Mock Twist Unisex Raglan Hoody

13 1714BL Women's Rush Pant

41 P800 Powerblend ECO® Fleece Pants - Open Bottom 30

3310 Youth Premium S/S Crew

13 1714BY Youth Rush Pant

41 P890 Youth Powerblend Eco® Fleece Pants - Open Bottom 31

3312 Youth CVC Crew

17 1714TU Men's Rush Jacket

41 P900 Powerblend ECO® Fleece Pants - Closed Bottom 30

3352 Youth CVC ¾ Raglan

10 1714TL Women's Rush Jacket

41 RW10 Reverse Weave® Pant 32

3600 Premium S/S Crew

12 1714TY Youth Rush Jacket

41 S101 Reverse Weave® Hood 32

3602 Long Body Crew

12 1715TU Men's Break Out Jacket

41 S149 Reverse Weave® Crew 32

3604 Men's Ringer Tee

10 1715TL Women's Break Out Jacket

41 S162 Mesh Shorts 38

3650 Unisex S/S Raglan Tee

10 4023NN All Sport Backpack

42 S260 Performance Fleece Full Zip Jacket 40

3710 Girl's Princess Tee

11 4026NN All Around Duffle Bag

42 S270 Performance Fleece Full Zip Jacket 40

3900 Women's Boyfriend Tee

11 4028NN All-Season Sling Bag

42 S600 Powerblend ECO® Fleece Crew 29

3904 Women's Ringer Tee

10 4100NN Trucker Mesh Hat

43 S690 Youth Powerblend Eco® Fleece Crew 31

5013 Women's Festival Muscle Tank

10 4101NN Twill Hat

43 S700 Powerblend ECO® Fleece Hood 29

5030 Women's Festival Scoop

11 4102NN Stretch Fit Hat

43 S750 Powerblend ECO® Colour Block Fleece Hood 28

5033 Women's Festival Tank

8 4203NU Slide Sandal

43 S790 Youth Powerblend Eco® Fleece Hood 31

5040 Women's Festival Sleeveless V

8 70053BU Powerblend ECO® Fleece Pants - Jogger

30 S800 Powerblend ECO® Fleece Zip Hood 29

5080 Women's Festival Cali Crop

9 8173 Mesh Shorts

38 S890 Youth Powerblend Eco® Fleece Zipped Hood 31

6010 Men's Tri-Blend Crew

8 8187 Classic Jersey Short

39 T137 Raglan Tee - Adult 33

6040 Men's Tri-Blend V

9 8180 Classic Jersey Short

39 T13Y Raglan Tee - Youth 33

6051 Unisex Tri-Blend ¾ Raglan

14 8214BU 10" Training Short With Pockets

39 T425 Short Sleeve Tee - Adult 33

6200 Poly/Cotton Crew

14 8215BL Women's Essential Cotton Short

39 T435 Short Sleeve Tee - Youth 33

6210 Premium CVC Crew

15 8731 Mesh Shorts

38

6310 Youth Tri-Blend Crew

9 A0300 Triblend Varsity Tee

24

6610 Women's CVC Crew

12 A0350 Women's Triblend Varsity Tee

24

6633 Women's Spandex Jersey Racerback Tank

14 A0380 Long Sleeve Henley

25

6640 Women's CVC Deep V

12 A0500 Sueded Fleece Crew

25

6710 Women's Tri-Blend Crew

13 A0550 Women's French Terry Crew

26

6730 Women's Tri-Blend Scoop

12 A0600 Sueded Fleece Pullover Hood

25

6733 Women's Tri-Blend Racerback Tank

14 A0650 Women's French Terry Zip Hood

26

6740 Women's Tri-Blend Deep V

15 A0700 Sueded Fleece Jogger

25

6933 Women's Terry Racerback Tank

15 A0750 Women's French Terry Jogger

26

9300 Unisex PCH Hooded Pullover Sweatshirt

14 B002 Reversible Practice Jersey

38

9800 Men's Denim Fleece Jogger

13 B900 Absolute Racerback Sports Bra

37

9801 Women's Denim Fleece Jogger

17 B940 Legging

37

## Champion

0348TL Women's Essential Racerback Tank

16 B960 Capri

37

0349TL Women's Allegro Keyhole Tank

16 CA33 Women's Mesh Shorts

38

0514BU Men's Surge Jogger

CC8C Long Sleeve Tee

33

0514BL Women's Surge Jogger

34 CO200 Packable Anorak Jacket

40

34 CV20 Champion Vapor® Tees - S/S

35

41 CV26 Champion Vapor® Tees - L/S

35

41 CW22 Essential Double Dry® Tee - Adult

36



# Making the world a more comfortable place.



Hanes has some big goals. By 2020 we are committed to:

- Securing 40% of our total energy from renewable sources
- Reducing our water usage by 50%
- Being 100% landfill free

Visit [Hanesforgood.com](http://Hanesforgood.com) to learn more about our sustainability efforts.



### Energy Star Partner of the Year — again

We're proud to announce that Hanes has been selected as a U.S. EPA ENERGY STAR Partner of the Year 9 times in a row.



As You Sow, a corporate responsibility advocacy group, gave "A" grades to HanesBrands for its code of conduct, compliance auditing, remediation and transparency.



HanesBrands has used over \$1 million in cash generated from the sale of recyclable materials to fund dozens of community development projects around the globe.



HanesBrands is one of only 3 apparel and shoe manufacturers to receive an "A" grade from this independent research tool.



All HanesBrands-owned offshore facilities and significant contract facilities have been certified by the Worldwide Responsible Accredited Production Organization.



HanesBrands is a fully accredited participating company in the Fair Labor Association.

## SOCIAL RESPONSIBILITY AND WRAP CERTIFICATION

At **Next Level Apparel** we are committed to the highest standards in every aspect of our business. Each member of our dynamic team is dedicated to delivering a superior customer service experience. We follow and adhere to the CPSIA (Consumer Product Safety Improvement Act) testing standards.

Our WRAP certified (Worldwide Responsible Accredited Production) factories are committed to the highest ethical standards of conduct and best quality practices. At Next Level Apparel we respect the rights of each individual and care for the environment.



### Protection of the Environment

Our mission is to create a garment that destroys the notion of a disposable tee, and in turn, we try to minimize our waste as much as possible.

Reducing the use of plastic in our operations, our garments are supplied to our distributors without the use of additional plastic bags and wrapping.

Our manufacturers all comply with all applicable environmental laws and regulations.

### Our Promise

In addition to being sweat shop free and child labor free, we take social responsibility to the **next level** in everything we do.

The Champion logo features a stylized 'C' with a red and white design, followed by the word 'Champion' in a white script font with a registered trademark symbol.

The Next Level Apparel logo consists of a white circle containing the letters 'NL' in black, followed by a vertical line and the words 'NEXT LEVEL' in a bold, white, sans-serif font, with 'APPAREL' in a smaller, spaced-out font below it.

The Timberlea Apparel logo features a circular emblem with a white background and a black border, depicting a forest scene with a winding path and a lake. To the right of the emblem, the word 'timberlea' is written in a lowercase, white, sans-serif font, with 'APPAREL' in a smaller, spaced-out font below it.

The Catalyst Group logo features the letters 'CG' in a stylized, blue and white font, followed by the words 'CATALYST' and 'GROUP' in a bold, white, sans-serif font.

5580 Timberlea Blvd. Mississauga, ON L4W 4M6

P: 905-629-7378/T.F: 1-877-602-6999

CG-orderdesk@catalystbiz.com

Champion, Next Level, and Timberlea are proudly distributed to the collegiate, team, concession, proshop, resort, promotional, and imprint markets in Canada by Catalyst Group.

**View the full line at [CatalystGroupBrands.com](http://CatalystGroupBrands.com)**